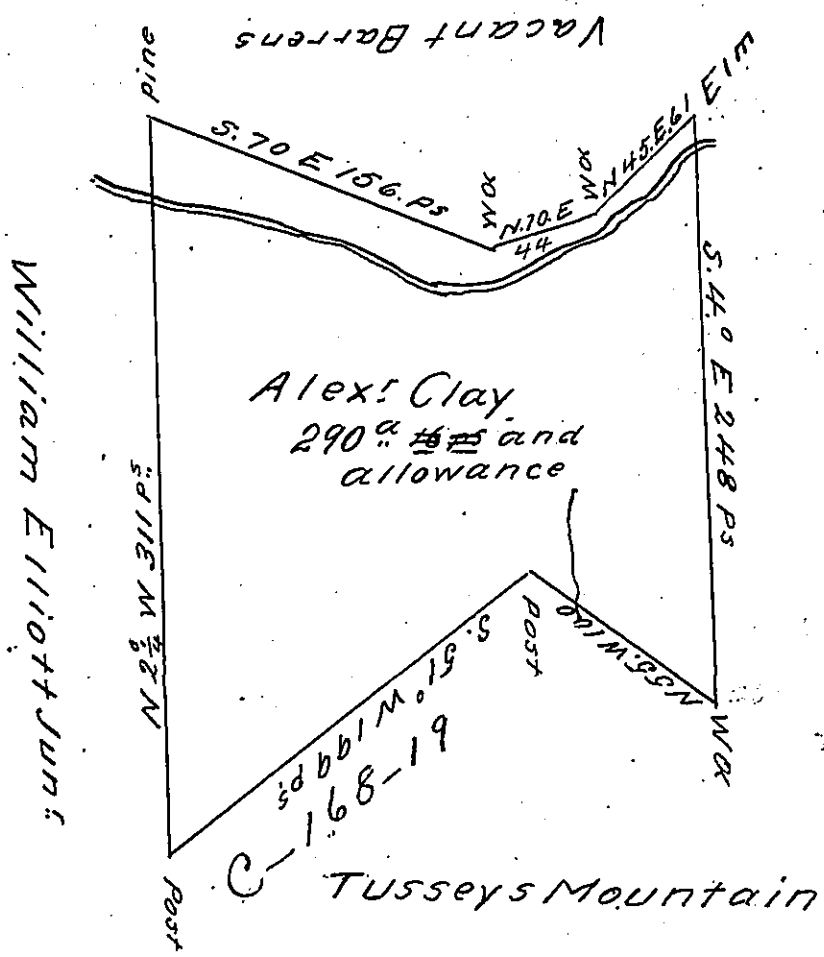


9-77-176



D 6-29

A Draught of a tract of Land situate at the foot of Tusseys Mountain in the County of Bedford containing two hundred and ninety acres ~~and 16 perches~~ and the usual allowance of six acres per Ct. for Roads and Highways. Surveyed June 1. 1767 for Alexander Clay in pursuance of a warrant dated Aug^r. 1. 1766 by Richard Tea as appears by his draught and field works which I have examined and find them to be correct July 29. 1783

George Woods D.S.

To John Lukens Esq
 Surveyor General

IN TESTIMONY that the above is a copy of the original remaining on file in the Department of Internal Affairs of Pennsylvania, made conformably to an Act of Assembly approved the 16th day of February, 1833, I have hereunto set my Hand and caused the Seal of said Department to be affixed at Harrisburg, this fifteenth day of February 1904

Leach R. Brown
 Secretary of Internal Affairs.